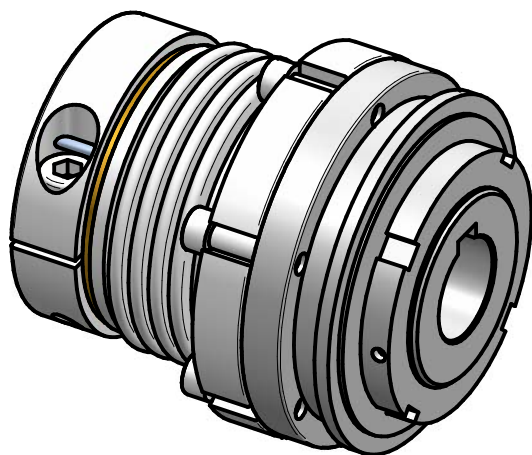
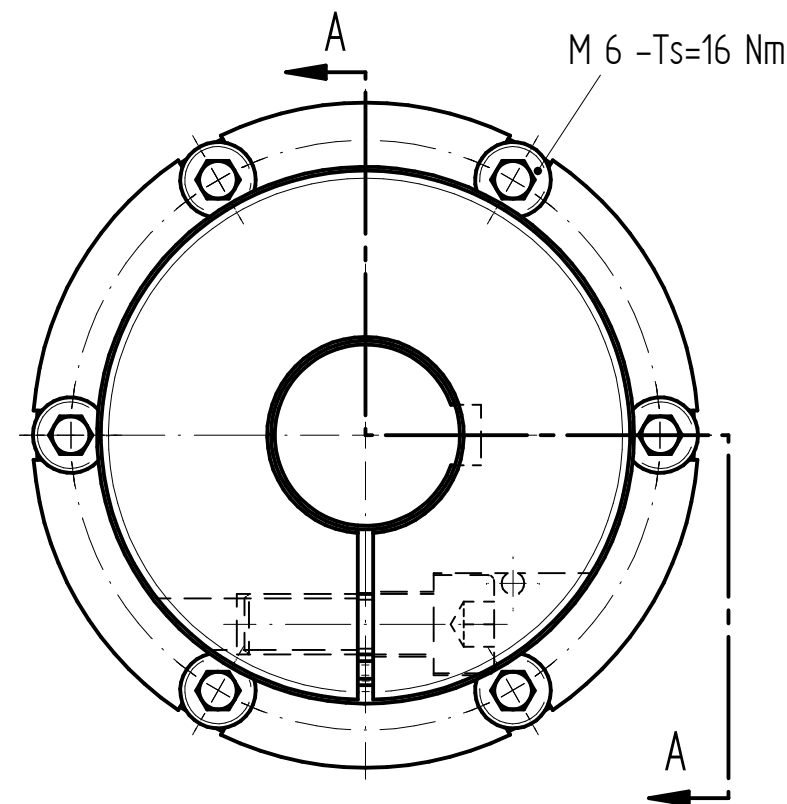


M8 - Ts=30 Nm



Technical Data:

setting range: 25 - 60 Nm
 torsional stiffness: 20 Nm/arcmin
 max. axial shaft displacement: $\pm 0,6$ mm
 max. lateral shaft displacement: 0,2 mm
 mass: approx. 1,7 kg
 moment of inertia: $1,35 \cdot 10^{-3} \text{ kgm}^2$
 $\phi D1$ min/max: 14 / 38 mm
 $\phi D2$ min/max: 11 / 32 mm
 temperature range: -30°C up to $+150^\circ\text{C}$



material

safety part: heat-treated steel
 clamping hub: high-tensile strength aluminum
 bellows: stainless steel
 screws: ISO 4762 / 12.9

| | | | | | | | |
|---------------|------------------------|------------------------|----------|------------|--------------------------------|-----------------|---------|
| Änderung | | | | | Werkstoffbezeichnung | Werkstoffnummer | Maßstab |
| | | | | | - | - | 1:1 |
| | | | | | Rohteil-/Vorteilnummer | Gewicht | |
| | | | | | - | - kg | |
| | | gepr. | 19.09.23 | IA | safety coupling SKW - KP 60 | | |
| | | gez. | 18.05.17 | Be | | | |
| Passung | Abmaß | Datum | Name | Benennung | Format | Artikelnummer | |
| DIN ISO 13715 | DIN ISO 2768-mK | | | | A4 | | |
| -0,4 | 0,5 ... 6 $\pm 0,1$ | | | | | | |
| | 6 ... 30 $\pm 0,2$ | | | | | | |
| | 30 ... 120 $\pm 0,3$ | | | | | | |
| | 120 ... 315 $\pm 0,5$ | | | | | | |
| | 315 ... 1000 $\pm 0,8$ | | | | | | |
| | | D-63839-Kleinwallstadt | | Ersatz für | - | ersetzt durch | - |

MB - 146 22279 - e